

Key of Bb

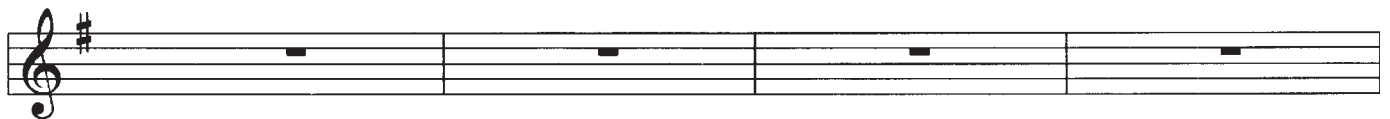
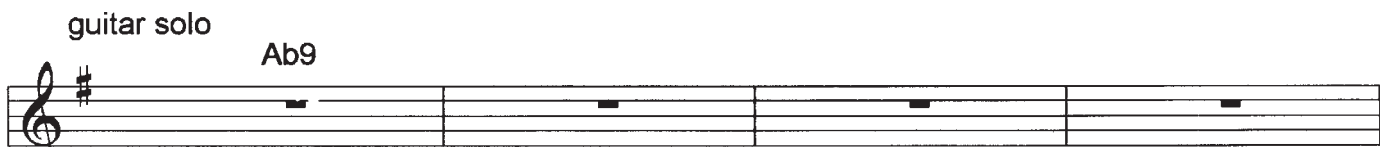
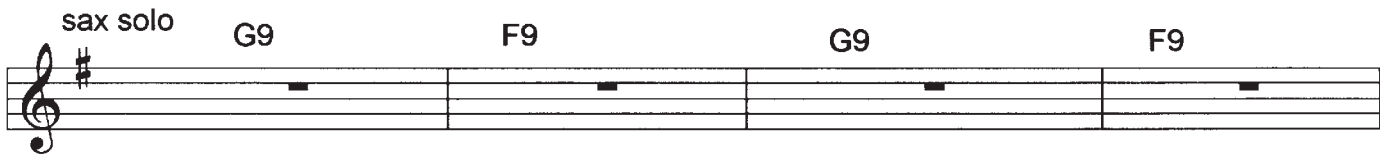


Blues At Eleven

CD Track 6 (Tuning Pitches)
CD Track 1 (full performance)
CD Track 7 (play-along)

Bob Johnson

G9 - vamp



© 2003, Bob Johnson, All Rights Reserved. Used By Permission

Blues At Eleven, cont'd

G9 F9 G9 F9

sax solo G9 F9 G9 F9

D9 C9 Bb9

G9 F9 G9 D7alt

solos - guitar (1st time)/sax (2nd time)

G9 F9 G9 F9

G9 F9 G9 F9

C9 Bb9 C9 Bb9

G9 F9 G9 F9

Blues At Eleven, cont'd

Ab9

Two staves of music, each with a treble clef and a key signature of one sharp (F#). Each staff contains four measures, each with a double bar line (//) in the center, indicating a placeholder for improvisation.

G9

F9

G9

F9

A single staff of music with a treble clef and a key signature of one sharp (F#). It contains four measures, each with a double bar line (//) in the center. Above the staff, the chord labels G9, F9, G9, and F9 are positioned above their respective measures.

G9

F9

G9

D7alt

A single staff of music with a treble clef and a key signature of one sharp (F#). It contains four measures, each with a double bar line (//) in the center. Above the staff, the chord labels G9, F9, G9, and D7alt are positioned above their respective measures.

CMaj7

Bbm7 Eb7

AbMaj7

F#m7 B7

A single staff of music with a treble clef and a key signature of one sharp (F#). It contains four measures, each with a horizontal line in the center. Above the staff, the chord labels CMaj7, Bbm7 Eb7, AbMaj7, and F#m7 B7 are positioned above their respective measures.

EMaj7

Bbm7 Eb7

AbMaj7

Am7 D7

A single staff of music with a treble clef and a key signature of one sharp (F#). It contains four measures, each with a horizontal line in the center. Above the staff, the chord labels EMaj7, Bbm7 Eb7, AbMaj7, and Am7 D7 are positioned above their respective measures.

bass solo - 4 times

A single staff of music with a treble clef and a key signature of one sharp (F#). It contains four measures, each with a double bar line (//) in the center and repeat signs (double dots) at the beginning and end of the staff.

drum solo - 4 times

A single staff of music with a treble clef and a key signature of one sharp (F#). It contains four measures, each with a double bar line (//) in the center and repeat signs (double dots) at the beginning and end of the staff.

D.C. al Coda

⊕

D9

C9

Bb9

A single staff of music with a treble clef and a key signature of one sharp (F#). It contains four measures of music with notes and rests. Above the staff, the chord labels D9, C9, and Bb9 are positioned above their respective measures.

G9

F9

G9

A single staff of music with a treble clef and a key signature of one sharp (F#). It contains four measures of music with notes and rests. Above the staff, the chord labels G9, F9, and G9 are positioned above their respective measures.

Bop Chorale



CD Track 6 (Tuning Pitches)
CD Track 2 (full performance)
CD Track 8 (play-along)

Bob Johnson

vamp

1. G7#9

2. G7#

G7#9

C7

G7#9

Ab9

D9

C9

Bb9

Bop Chorale, cont'd

Ab9 D9

G7#9 To Coda

guitar solo - 4 times

G7#9 G7#9 C7 G7#9

Ab9 D9 C9 Bb9

Ab9 D9 G7#9

vamp - G7#9

sax solo (4 times)/ bass solo (2 times)

G7#9 G7#9 C7 G7#9

Ab9 D9 C9 Bb9

Ab9 D9 G7#9 D.S. al Coda

Bop Chorale, cont'd



G7#9

C7

G7#9



Release The Hounds

CD Track 6 (Tuning Pitches)
 CD Track 3 (full performance)
 CD Track 9 (play-along)

Brewer/Johnson

vamp G7 C7

G7 D7alt

G7 C7

G7 C#7

C7 C#7

G7 Ab7

D11 C11 Bb11 Ab11

G7 D7alt Fine

Release The Hounds, cont'd

solos (guitar 1st time/sax 2nd time)

Chord progression for the solo:

- Staff 1: G7, C7, G7, C#7
- Staff 2: C7, C#7, G7, E7
- Staff 3: D7, C7, G7, D7alt
- Staff 4: G7, C7, G7, C#7
- Staff 5: C7, C#7, G7, Ab7
- Staff 6: D11, C11, Bb11, Ab11, G7, D7alt
- Staff 7: C7, G7, C7, D7, D7alt
- Staff 8: G7, C7, G7, D7alt, D.S. al Fine



Blue Tide

CD Track 6 (Tuning Pitches)
 CD Track 4 (full performance)
 CD Track 10 (play-along)

Bob Johnson

vamp

D13 Cm9 D13 Cm9 D13 Cm9 G7#9 Dsus D7alt

sax solo - 3 times

G9 F9 G9 C#7 C13 Cm9 G9 D#7

piano solo

D13 Cm9 G9 Dsus D7alt C9 Bb9 C9

C9 Bb9 C9 F9 Eb9 F9 Eb9

C9 Bb9 C9 G13 Fm9 C9 Gsus 7alt

C#9 B9 C#9 G7 F#9 F#m9 C#9 A7

Ab13 F#m9 C#9 Absus Ab7alt

Blue Tide, cont'd

bass solo

C#7

Two staves of musical notation for a bass solo. The first staff contains eight measures, each with a double bar line (//). The second staff contains four measures with double bar lines, followed by a final measure with a melodic line.

guitar solo

Six staves of musical notation for a guitar solo, each with a treble clef and a key signature of two sharps (F# and C#). The staves contain double bar lines (//) and are labeled with the following chords: D9, C9, D9, Ab7, G13, Gm9, D9, Bb7; A13, Gm9, D9, Asus A7, D9, C9, D9, Ab7; G13, Gm9, D9, Bb7, A13, Gm9, A13, Gm9; and A13, Gm9, D7.



Walkin' The Dawgs

CD Track 6 (Tuning Pitches)
CD Track 5 (full performance)
CD Track 11 (play-along)

Bob Johnson

vamp - 4 times

E7#9

E7#9

A7#9 E7#9

C7#9 Bb7#9 Ab7#9 G7#9

E7#9 To Coda

synth solo - 3 times

E7#9 A7#9 E7#9

C7#9 Bb7#9 Ab7#9 G7#9 E7#9

Walkin' The Dawgs, cont'd

guitar solo

F#7#9 B7#9 F#7#9

D7#9 C7#9 Bb7#9 A7#9 F#7#9

Em11 Fm11 Dm11 Ebm11 Em11 Fm11 Dm11 Ebm11

bass solo

32 D.S. al Coda

⊕

vamp out

E7#9